



DELHI PUBLIC SCHOOL

SAIL TOWNSHIP, RANCHI

HALF YEARLY EXAMINATION (2022-23)

Class - VII
Time - 90 Minutes

Subject - Computer Science
Maximum Marks- 50

Select the most suitable alternative:

1X50=50

1. Secondary memory is also known as:
 - a. Auxiliary memory
 - b. Backup memory
 - c. Primary memory
 - d. Both a and b
2. BIOS stands for:
 - a. Basic Input Output Software
 - b. Basic Input Output System
 - c. Beginner's Input Output Software
 - d. Beginner's Input Output System
3. The freely available Word Processing Package available in Linux:
 - a. Libre Office Word
 - b. Libre Office Writer
 - c. MS Word
 - d. Notepad
4. Select the odd one out:
 - a. Slackware
 - b. Firmware
 - c. Ubuntu
 - d. Solaris
5. is the limitation of the computer.
 - a. Apathetic
 - b. Versatile
 - c. Diligence
 - d. Flexible
6. This device was developed by Christopher Latham Sholes.
 - a. CRT
 - b. Joystick
 - c. Keyboard
 - d. Mouse

7. Official mascot of linux is:
 - a. Coffee Beans
 - b. Tux
 - c. Sprite
 - d. Turtle
8. The first operating System was developed by:
 - a. Microsoft
 - b. General Motors
 - c. Apple
 - d. None of these
9. The core of an Operating System is known as:
 - a. Booting
 - b. Buffer
 - c. Kernel
 - d. Motherboard
10. refers to the extra features that can be applied to the tags.
 - a. Markup
 - b. Hypertext
 - c. Attributes
 - d. None of these
11. OCR stands for:
 - a. Optical Character Recognizer
 - b. Optical Character Reader
 - c. Both a and b
 - d. None of these
12. This portion of CPU is used for swapping of information between the primary memory and ALU.
 - a. Main memory
 - b. Secondary memory
 - c. Auxiliary memory
 - d. Cache memory
13. captures unique information of human body.
 - a. Biological meter
 - b. Optical sensor
 - c. Biometric sensor
 - d. None of these
14. is the electronic regulator component that receives electricity from the main power supply and then supply to other components.
 - a. Modem
 - b. SMPS
 - c. Regulator
 - d. MCB

15. operating System was acquired by Oracle.
- Linux
 - Solaris
 - Windows
 - Android
16. The default scrolling effect in a MARQUEE tag is:
- left to right
 - right to left
 - top to bottom
 - bottom to top
17. Select the correct syntax:
- ``
 - ``
 - `<IMAGE SRC="C:\DOLPHIN.JPG">`
 - ``
18. In HTML, tags are:
- case sensitive
 - case insensitive
 - upper case
 - lower case
19. Which of the following is not an attribute of <BODY>tag?
- BACKGROUND
 - BGCOLOR
 - DLINK
 - ALINK
20. In unordered list, the default type is:
- Square
 - Circle
 - Disc
 - Triangle
21. The process of linking two different documents present in the same server.
- External linking
 - Internal linking
 - Data linking
 - Page Linking
22. Which tag is used to create Numbered list:
- ``
 - `<ne>`
 - ``
 - ``

23. HTML headings are defined with tags.
- a. <head1> to <head6>
 - b. <p1> to <p6>
 - c. <h1> to <h6>
 - d. <h1> to <hn>
24.attribute specifies the alternate text for the image
- a. Alternate
 - b. Alt
 - c. Linux
 - d. All of the above
25. Which one of the following is not an OS?
- a. Dos
 - b. Oracle
 - c. Linux
 - d. Windows
26. To create HTML document..... required.
- a. Notepad
 - b. Web browser
 - c. Both a and b
 - d. Only a
27. Linux was developed by:
- a. Tim Berners-Lee
 - b. Douglas Engelbart
 - c. (Linus Torvalds
 - d. one of these
28. is placed towards the right side of the panel.
- a. Recycle bin
 - b. Trash
 - c. System tray
 - d. Main button menu
29. Linux is a:
- a. Windows OS
 - b. Private OS
 - c. Open source operating system
 - d. CUI OS
30. Which is the latest version of Windows OS?
- a. Windows 8
 - b. Windows 11
 - c. Windows 10
 - d. None of these

31. keyboard layout is used in Germany and Central Europe.
- a. QWERTY
 - b. QWERTZ
 - c. AZERTY
 - d. DVORAK
32. How many digits are required to represent MICR code?
- a. 9
 - b. 8
 - c. 10
 - d. 7
33. Select the correct syntax:
- a. `<BODY BACKGROUND COLOR="blue">`
 - b. `<BODY BGCOLOR="Blue">`
 - c. `<BODY BGCOLOUR="Blue">`
 - d. None of these
34.tag is used to apply moving text.
- a. Marquee
 - b. Hypertext
 - c. Image
 - d. Text
35. The output device that helps in printing high-quality graphics or visuals.
- a. Printer
 - b. Plotter
 - c. Typewriter
 - d. keyboard
36. The application program that is stored on a remote server and can be accessed through web browser.
- a. Hybrid apps
 - b. Native apps
 - c. Web apps
 - d. None
37. apps are platform dependent apps.
- a. Web apps
 - b. Naïve apps
 - c. Hybrids apps
 - d. Utility apps
38. The first commercial version of android 1.0 was released on:
- a. 22nd September 2007
 - b. 23rd September 2008
 - c. 23rd September 2001
 - d. 23rd September2009

39. QR stands for:
- a. Quick request
 - b. Quality response
 - c. Quick response
 - d. Quick report
40. Select the odd one out:
- a. ECLIPSE
 - b. Net Beans
 - c. MIT App inventor
 - d. Android Studio
41. Contact, gallery, camera are types of:
- a. Entertainment apps
 - b. Social networking
 - c. Native apps
 - d. Utilities apps
42. Android applications are available in:
- a. Google play store
 - b. Apple App Store
 - c. Microsoft store
 - d. All of these.
43.apps provide platform for online learning.
- a. Utility apps
 - b. Educational apps
 - c. Communication apps
 - d. Learning apps
44. The quality of images captured by digital camera is measured in:
- a. dpi
 - b. ppm
 - c. Pixels
 - d. cps
45. is a volatile memory
- a. ROM
 - b. PROM
 - c. RAM
 - d. EPROM
46. TFT, LCD and LED are types of:
- a. Printer
 - b. Plotter
 - c. Monitor
 - d. Keyboard

47.is a GUI operating system.
- a. Windows
 - b. Linux
 - c. both A and B
 - d. None of these
48. Select the odd one out of the following:
- a. Panel
 - b. Task bar
 - c. Main menu button
 - d. Trash
49. HTML is a language for creating web pages.
- a. programming
 - b. markup
 - c. OOP
 - d. procedural
50. Google apps are commonly used in Smartphone.
- a. False
 - b. True
 - c. Cannot say
 - d. None of these
-



DELHI PUBLIC SCHOOL
SAIL TOWNSHIP, RANCHI
HALF YEARLY EXAMINATION (2022-23)

Class - VII
Time - 3 Hours

Subject - English
Maximum Marks- 80

General Instructions :

1. The question paper is divided into three sections :- A, B and C.
 2. It is compulsory to attempt all the sections.
 3. Hand writing carries marks.
-

Section – A (Reading)

- I. **Read the following passage carefully and answer the questions that follow:**

WHAT WERE THE ARYANS IN INDIA LIKE ?

1. The Aryans must have come to India five or six thousand years ago or perhaps even more. Of course they did not all come in a bunch. Army after army, tribe after tribe, family after family, must have come for hundreds of years. Imagine them travelling in long caravans with all their household goods laden on carts or on the backs of animals. They did not come as tourists do nowadays. There was no going back for them. They came to stay, or fight and die. Most of them, as I have told you, came over the mountains of the north-west. But perhaps some came by sea also from the Persian Gulf and went in their little ships up the river Indus.
2. What were these Aryans like? We can find out a lot about them from the books they wrote. Some of these books like the Vedas, are perhaps the oldest books in the world. Probably they were not written down to begin with. They were learnt by heart and recited and chanted to others. They are written in such beautiful Sanskrit that you can almost sing them. Even now it is a pleasure to hear a man with a good voice, who knows Sanskrit, recited the Vedas. The Vedas are considered very holy books by Hindus. But what does the word Vedas mean ? It means knowledge. And the Vedas contained the knowledge which the wise men of those days, called rishis and munis, had gathered. They did not have railways, telegraphs and cinemas in those days. But that does not mean that they were ignorant. Some people think that the wise men of olden days were wiser than any today. But whether they were wiser or not they wrote wonderful books which even today are greatly admired. This itself shows how great these men of the olden days must have been.
3. As I have said, these Vedas were not at first written. They were remembered and were handed down from generation to generation by word of mouth. They must have had wonderful memories in those days. How many of us can learnt by heart whole books ?

4. Those days when the Vedas were written are called the Vedic period. The first Veda is the Rig Veda. It is full of hymns and songs which the old Aryans used to sing. They must have been a very light-hearted people, not morose and gloomy but full of joy and adventure. And in their joy they made beautiful songs and sang them to the gods they worshiped.
5. They were very proud of themselves and their race. The very word 'Arya' meant a gentleman, a superior kind of person. And they loved freedom greatly. They were not like their descendants in India today who have little courage and hardly feel the loss of their freedom. To the Aryans death was better than dishonour or slavery.
6. They were good fighters, and they knew something of science and a great deal of agriculture. They naturally attached great value of agriculture and so they valued everything that helped agriculture. The great rivers gave them water and they loved them and looked upon them as great friends and benefactors. The bull and cow helped them also very much both in agriculture and in their daily lives, for the cow gave milk which was valued very greatly. So they specially cared for these animals and sang their praises. Long afterwards, people, forgetting the real reason for the care of the cow, started worshipping her as if that was any good to anybody.

Source: Letters from a Father to the Daughter – J.L. Nehru

Answer the following questions.

[1x4]

- (1) When did Aryans come to India?
- (2) What do the books written by Aryans tell us?
- (3) Why did Aryans value rivers, bulls and cows?
- (4) What shows that the Aryans were great?

(5) Fill in the blanks.

[1x2]

- (a) The Aryans must have had _____ memories in those days.
- (b) Those days when the Vedas were written are called _____ .

(6) What are the two important features of the Vedas?

[1+1]

(7) Find a word from the passage which has the same meaning as the following.

[1x2]

- (a) one without knowledge (Para 2)
- (b) bondage (Para 5)

II. Read the following poem carefully and answer the questions that follow:

[1x10]

IMAGE

On the door step of the temple
under the hot sun
I see her everyday.
Her hands and feet are
withered like limbs of a dead tree.

Her eyes tired of searching
for rays of hope
are sunk deep like caves
in a rock.

Neither they receive light
nor give it.

Her three yard sari
has torn in thirty places.
Her body has absorbed
sixty years of dirt.
Her knotty matted hair
is the abode of work and ice.
Here and there some black teeth
stand as guards in her open mouth.
The lines on her face
like the crow's feet.

Raising her shaking hands
with hope in her eyes
she looks at me
and an electric current
joins together our two hearts.
Time goes back fifteen years,
her face changes, her eyes twinkle !
When she smiles, her teeth dazzle !
In that one magic moment
I see the image of my dead mother.

Based on your understanding of the poem, complete the following paragraph.

The poet sees (1) _____ near the temple everyday. He compares her hands and feet to the (2) _____. Her eyes are sunk deep like caves. Her (3) _____ and (4) _____ reflect her inability to maintain personal hygiene. Yet, when she raised her (5) _____ and looked at the poet, he became nostalgic and thought of his dead mother.

- (1) (a) her (b) him (c) them (d) their
- (2) (a) branches of a tree (b) roots of a tree (c) limbs of a dead tree (d) flower
- (3) (a) clothes (b) beautiful saree (c) top (d) shirt
- (4) (a) eyes (b) hands (c) body (d) feelings
- (5) (a) eyes (b) shaking hands (c) leg (d) feet
- (6) Name the figure of speech used in the first stanza .
- (7) What happened before fifteen years in poet's life ?
- (8) "Her eyes tired of searching for rays of hope". Explain the line.
- (9) Why does the image change in the last stanza ?
- (10) Find a word in the poem which means 'thick mass due to dirt'.

Section – B(Writing and Grammar)

- III. You are Amarjeet / Amrit, the Cultural Secretary of your school. You have been asked to inform students of Class – VI – VIII about a Drama Competition in your School. Draft a notice in about 50 words to be put up on the school notice board, with all necessary detail. [5]

OR

Write a letter to your friend describing a wedding ceremony you have attended and how you enjoyed yourself.

- IV. India is a country of festival. Write a creative paragraph on the topic “The Scene at a Market Place” during festivals. [5]

OR

A friend in need is a friend in deed.

- V. Rewrite the given sentences using the correct form of the Verb given in the brackets. [1x3]

- (1) Which shirt he (wear) yesterday ?
- (2) We (do) our shopping for the festival last week.
- (3) My father (live) in Delhi but I stay here.

- VI. Change the following into Passive Voice. [1x3]

- (1) The Prime Minister will hoist the flag.
- (2) My grandmother told me many stories.
- (3) Shashi was writing a story.

- VII. Identify whether the Verb is Transitive or Intransitive. [1x2]

- (1) The children laughed cheerfully.
- (2) The tailor stitched the dress.

- VIII. Find out Direct object from the following sentences. [1x2]

- (1) My father gifted me a car.
- (2) Please don't pluck the flowers.

- IX. Correct the errors in the given sentences and rewrite with other necessary changes. [1x3]

- (1) She still needs some advices from the expert.
- (2) The peoples in the country are hard working.
- (3) I didn't buy some fruits from the market.

- X. Complete the sentences using appropriate Pronoun. [1x2]

- (1) _____ is the house which belongs to Rishi.
- (2) _____ does your father live ?

XI. Do as directed:

[1x10]

- (1) What a smart man he was ! (Identify subject)
- (2) The tourist angry and tired, asked the travel agent for a refund. (Identify predicate)
- (3) Alas ! we lost the final match ! (Change it into assertive)
- (4) our school band / which / had / the band / competed against / won many competition (Arrange to form a meaningful sentence)
- (5) His sense of _____ is quite amazing. (Write the abstract noun of humorous)
- (6) This successful author belongs to a middle class family. (Identify gender of the underlined)
- (7) The man lives next to my house. The man is a famous politician. (Join the sentences with a suitable relative pronoun)
- (8) A _____ lamb lost its way. (Fill in the blank with adjective)
- (9) This is best of all stories. (Identify error)
- (10) I met my friend who is architect now. (Rewrite the sentence inserting Article were missing)

Section – C (Literature)

XII. Answer the given questions with reference to the context.

[1x10]

(A) “I sat for a while, frozen with horror, and then, in the listlessness of despair, I again turned over the pages.”

- (1) Why was the speaker in a state of despair ?
- (2) What pages is he referring to ?
- (3) What were the contents of the pages ?
- (4) What does listlessness mean here ?
- (5) Which mental condition of the speaker does the above line refer to ?

**(B) “What though we toss at the fall of the sun
Where the hand of the sea – God drives ?
He who holds the storm by the hair,
Will hide in his breast our lives,”**

- (1) ‘We toss’, what does toss mean here ?
- (2) Who is ‘he’ ?
- (3) Whose lives does he hold ?
- (4) What does the speaker mean by the last line of the stanza ? Explain in a sentence.
- (5) What relation does the poet describe before these line ?

XIII. Answer (ANY FOUR) questions in 20 to 30 words.

[2x4]

- (1) Why were the family members satisfied with the name Attila ?
- (2) What do you think is the wealth to the fisherman ?
- (3) Why did Jerome decide to go to the doctor ?
- (4) Why did grandmother not want to keep the Python at home ?
- (5) Why did grandfather say that the Python is conceited ?

XIV. Answer (ANY ONE)question in 50 to 60 words :

[3]

Is it good to be your own doctor and self medicate by surfing net ? What are the dangers involved in it ?

OR

Do you think the practice of 'Snake Charming' is right ? Give reason for your answer.

XV. Vocabulary :

[1×4]

- (1) I have given my car to a new mechanic for repair, hope he _____. (Choose the correct option)
 - (a) cut the ground from under feet.
 - (b) delivers the goods.
 - (2) The antonyms of abdicate is _____ .
 - (3) A man who waste money is called _____ .
 - (a) rough (b) squander (c) economic (d) unkempt
 - (4) Make a sentence using a word consistent to define the meaning of the word.
-



DELHI PUBLIC SCHOOL
SAIL TOWNSHIP, RANCHI
HALF YEARLY EXAMINATION (2022-23)

Class - VII
Time - 90 Minutes

Subject - French
Maximum Marks-40

Section A (COMPRÉHENSION ÉCRITE) Marks-10

C'est Noël ce weekend . Aujourd'hui M. Lafont va faire du shopping pour sa famille. Il va au supermarché près de sa maison. Il veut acheter une belle robe pour sa femme. Alors, il demande le rayon de vêtements pour les femmes. La vendeuse répond << au deuxième étage à gauche s'il vous plaît>> Ensuite, il prend l'ascenseur et il arrive au deuxième étage. M.Lafont voit beaucoup de robes, finalement il achète la robe rouge. Après acheter le chapeau, il veut acheter aussi un chapeau avec la robe et il va au premier étage au rayon de chapeaux. Au même étage il y a le rayon des enfants. Maintenant, il achète des cadeaux pour ses enfants, un jeu vidéo pour son fils et une poupée pour sa fille . Enfin M. Lafont paie et rentre sa maison.

1. Répondez aux questions: **[5]**

- a. Pourquoi M.Lafont va faire du shopping aujourd'hui?
- b. Qu'achète M. Lafont pour sa femme?
- c. Que répond la vendeuse à M.Lafont?
- d. Où allez M.lafont?
- e. Qu'est-ce qu'il achète pour ses enfants?

2. Complétez avec un mot du texte : **[2.5]**

- a. Le samedi je fais du _____ avec ma mère.
- b. Des jupes et des robes sont les _____ des femmes.
- c. Mon appartement est au troisième _____.
- d. Nous prenons _____ pour aller au rayon des manteaux.
- e. J'invite mes amis ce _____.

3. Donnez les contraires du texte: **[2.5]**

- a. Sans
- b. D'abord
- c. À droite
- d. Avant
- e. Un peu de

SECTION-B (EXPRESSIONS ECRITE) Marks-5

1. Écrivez une lettre à votre ami en décrivant votre ville en 30-40 mots.

SECTION- C (GRAMMAIRE) Marks-15

1. Complétez avec l'adverbe de quantité. [2.5]

- a.livres achetez-vous?
- b. IL y a étudiants dans la classe.
- c. Nous avons devoirs à faire ! Nous sommes fatigué.
- d. Paul a de travail.
- e. Vous achetez de cahiers que votre copain.

2. Changez dans la forme negative. [2.5]

- a. Les filles vont au marché.
- b. Tu parles avec tes amis.
- c. IL achète ces livres.
- d. Vous êtes français.
- e. Nous dormons à 8 heures.

3. Conjuguez les verbes au présent de l'indicatif. [2.5]

- a. Ils..... leur travail à l'heure.(finir)
- b. Est-ce que vous.....une bouteille d'eau minérale ? (acheter)
- c. Mes parents.....au cinéma. (aller)
- d.Vous..... une lettre? (écrire)
- e. Mon père.....le journal. (lire)

4. Écrivez cinq avoir expression. [2.5]

5. Mettez à l'interrogatif. [2.5]

- a. Nous allons à Paris.
- b. Vous avez un frère.
- c. Elle parle au médecin.
- d. Tu apprends la langue française.
- e. Ils finissent leur travail à l'heure.

6. Trouvez la question par utilise adverbe interrogatif. [2.5]

- a. Il y a trente étudiants dans la classe.
- b. Nous prenons nos repas dans la salle à manger.
- c. Valérie arrive ce soir
- d. Il va au bureau ce dimanche parce qu'il a un rendez-vous avec son patron.
- e. Ma classe est grande et claire.

SECTION-D (CULTURE ET CIVILISATION) Marks-10

1. Liez les colonnes A et B. [2]

A

B

- | | |
|--------------------|----------------------|
| 1. le coq | (a) l'hymne national |
| 2. Marianne | (b) parfumeur |
| 3. Chanel | (c) la République |
| 4. La Marseillaise | (e) la fierté |

2. Répondez les questions. [4]

- deux couturiers français.
- deux parfumeurs français.
- deux voitures françaises.
- deux aéroports français.

3. Dites vrai ou faux. [2]

- Chanel est une voiture.
- Paris Orly est un port.
- Victor Hugo est un écrivain français.
- Le Rhône est un fleuve en France.

4. Selon l'image écrivez le nom des monuments. [2]





DELHI PUBLIC SCHOOL
SAIL TOWNSHIP, RANCHI
HALF YEARLY EXAMINATION (2022-23)

Class - VII
Time - 90 Minutes

Subject - General Knowledge
Maximum Marks-50

MULTIPLE CHOICE QUESTIONS-

1. What are the two numbers 11 and 23?
 - a. Composite numbers
 - b. Even numbers
 - c. Co-prime numbers
 - d. None
2. If there are three whole numbers: a, b & c, then what will be a x (b + c)
 - a. $b + a \times c$
 - b. $a b + c$
 - c. $a \times b + a \times c$
 - d. None
3. On a number line, where is the predecessor of a number located?
 - a. Right
 - b. Bottom
 - c. Left
 - d. None
4. What is true about the absolute value of an integer?
 - a. It is always negative
 - b. It is always positive
 - c. Both a & b
 - d. None
5. Which of the following is a combination for inserting a footnote?
 - a. Ctrl + Alt + A
 - b. Ctrl + Alt + X
 - c. Ctrl + Alt + F
 - d. None
6. Who defeated Wang Zhi Yi on 17th july 2022 in the final of Singapore open?
 - a. PV Sindhu
 - b. Sania Nehal
 - c. Srikanth Kidambi
 - d. Pullela Gopichand

7. Where is khumbu glacier located at?
 - a. Greenland
 - b. Nepal
 - c. Antarctica
 - d. Candian arctic
8. PNS Taimur, which was delivered by china to Pakistan, is a.....?
 - a. Frigate
 - b. Corvette
 - c. Destroyer
 - d. Aircraft carrier
9. Which is the venue of the 11th World Urban Forum held in 2022?
 - a. Europe
 - b. London
 - c. Poland
 - d. Kenya
10. 'Financial Stability Report' is flagship publication of which institution?
 - a. SBI
 - b. RBI
 - c. ICICI
 - d. Kodak bank
11. The southernmost active volcano in the world

 - a. Mount Etna
 - b. Kilauea
 - c. Stromboli
 - d. Erebus

12.can stay aloft in windy weather for hours without flapping their wings.
 - a. Albatrosses
 - b. Sparrows
 - c. Gulls
 - d. None
13. An animal which is killed for food

 - a. Prey
 - b. Seal
 - c. Penguins
 - d. None

14. I have a head made of snakes & the ability to turn people to stone if they look into my eyes.
 - a. Sea horse
 - b. Hippopotamus
 - c. Frog
 - d. Medusa

15. Thealso known as the Marigalante was the largest of three Spanish ships used by Christopher Columbus.
- Santa Maria
 - Castilla
 - Spanish brig Infante
 - None
16. A glacier located near the karakoram Pass, which is the source of the Nubra River
- Gangotri
 - Siachen
 - Pindari
 - Cotopaxi
17. is the study & formation of the universe.
- Andromeda
 - Canis major dwarf
 - Cosmology
 - Virgo A.
18.is the father of India's nuclear programme.
- Homi j.Bhabha
 - Baburao Bagul
 - Zail Singh
 - Girish Karnad
19. is the collective name for material arts which originated in china.
- Mario
 - Road Runner
 - Kung Fu
 - None
20.,an ancient city of the Harappan civilization, situated in Gujarat.
- Dholavira
 - Rupar
 - Rakhigarhi
 - Lothal
21. Kalpana Chawla was the Mission specialist sent by NASA aboard the ill- fated space shuttle.....
- Atlantis
 - Endeavour
 - Columbia
 - None
22. The ISRO is the Primary government run body for space research in India established in
- 1929
 - 1969
 - 1989
 - None

23. Vostok, Appollo 13 are all names of :-
- Lunar mission
 - Solar mission
 - Space crafts
 - None
24. Sidhu & Kanhu Murmu were two tribal leaders who rose against the British. Which tribe did they belong to ?
- Bhil
 - Gond
 - Santhal
 - None
25. Who was the first Dalit President of India ?
- APJ Abdul Kalam
 - K.R Narayanan
 - Zail Singh
 - None
26. The study of disease causing organism..
- Pathology
 - Mycology
 - Microbiology
 - None
27. The study of the soils & their productivity-
- Agrology
 - Botany
 - Ecology
 - None
28. Which country hosted the ICC, Men's T20 World cup in 2021?
- India
 - Sri Lanka
 - United Arab Emirates
 - None
29. Who was India's first captain in the T20 International ?
- Virendra Sehwag
 - MS. Dhoni
 - Sachin Tendulkar
 - None
30. It is a weapon based martial art associated with the Sikh of the Punjab.
- Capoeria
 - Gatka
 - Kendo
 - None

31. Trachea is the scientific name of windpipe-
- a. True
 - b. False
 - c. Can't say
 - d. None
32. Hoofed animals are called ungulates-
- a. True
 - b. False
 - c. Uncertain
 - d. None
33. The first kind of laser to be invented was helium-neon-
- a. True
 - b. False
 - c. Can't say
 - d. None
34. COVID-19 is an infectious disease caused by the SARS-COV-2 virus-
- a. Yes
 - b. No
 - c. Uncertain
 - d. None
35. A Crescograph is a device that measures plant growth-
- a. Yes
 - b. No
 - c. Still finding
 - d. None
36. The operating system, fire fox has a fox as its logo-
- a. True
 - b. False
 - c. Uncertain
 - d. None
37. Food is measured in -----
- a. Kilojoules
 - b. Milligram
 - c. Gram
 - d. None
38. Which test is used to test night blindness-
- a. Ishihara test
 - b. Conjunctivitis
 - c. Cornea
 - d. All the above

39. Who among these was a tribal leader who played a prominent role in India's fight for freedom-
- a. Tantia Tope
 - b. Birsa Munda
 - c. Nanasaheb
 - d. None
40. What is the capital of Japan?
- a. Tokyo
 - b. Cairo
 - c. Lagos
 - d. Manila
41. Name the capital of Egypt-
- a. Cairo
 - b. Dhaka
 - c. Karchi
 - d. d Manila
42. What produce phantoms that can be seen on land or at sea?
- a. Breeze
 - b. Zooplankton
 - c. Optical illusions
 - d. None
43. Name the largest star located 640 light years away from the earth.
- a. Betelgeuse
 - b. Alnilam
 - c. Aldebaran
 - d. Sun
44. Name one of the world's oldest rainforest, dating back 135 million years.
- a. Daintree
 - b. Evergreen
 - c. Coniferous
 - d. None
45. What plant species did scientists discovered in India's Andaman archipelago?
- a. Green algae
 - b. Cyanobacteria
 - c. Diatom
 - d. Rhodophyta
46. Name the American Paralympic swimmer?
- a. Katie Ledecky
 - b. Jessica Long
 - c. Michael Phelps
 - d. None of the above

Q. A family consists of six members P,Q,R,X,Y and Z.

Q is the Son of R but R is not mother of Q. P & R are married couple. Y is the brother of R. X is the daughter of P. Z is the brother of P.

47. Who is the brother in law of R?

- a. P
- b. Z
- c. Y
- d. X

48. Who is the father of Q?

- a. R
- b. P
- c. Z
- d. None

49. How many children does P have?

- a. One
- b. Two
- c. Three
- d. Four

50. How many female members are there in the family

- a. One
- b. Two
- c. Three
- d. Four

Answer key;-

- 1-c-Co-prime
- 2-c- $a \times b + a \times c$
- 3-c-Left
- 4-b- It is always positive
- 5-c- Ctrl + Alt+ F

6-PV sindhu

- 7- Nepal
- 8- frigate
- 9-Poland
- 10-RBI

- 11-Erebus
- 12-Albatrosses
- 13-Prey
- 14-Medusa
- 15- Santa Maria
- 16- Siachen
- 17- Cosmology
- 18- Homi J. Bhabha
- 19- Kung fu
- 20- Dholavira

- 21-C- Columbia
- 22-b-1969
- 23-c-Space craft
- 24- c-Santhal
- 25-c- K.R Narayanan
- 26-a-Pathology
- 27-a- Agrology
- 28-c- United Arab Emirates
- 29- a- Virender sehwaq
- 30-b- Gatka

- 31] T
- 32] T
- 33] T
- 34] T
- 35] T
- 36] T
- 37] Kilojoules
- 38] Ishihara
- 39] Birsa munda
- 40] Tokyo
- 41] Cairo

42] Optical Ilusion

43] Betelgeuse

44] The Daintree Rainfores in Tropical North Queensland plant species

45] Mermaid, a marine green algae

46] Jessica long

47] Z

48] R

49] Two

50] Two

.....xxxxxxx.....
.....xxxxxxx.....

	(10) den Atlas... wo ist er denn?	
3	<p>Lies den E- mail und schreib die Antwort an Ben. Schreib ca. 40 Wörter.</p> <p>Hallo Stefan,</p> <p>Ich bin in der siebten Klasse. Meine Schule heißt Clara - Schumann - Gymnasium und liegt in der Kirchenstraße in München. Mein Stundenplan ist cool! Mathe und Deutsch haben wir jeden Tag. Am Montag und am Donnerstag habe ich Biologie, Erdkunde und Sport. Erdkunde mag ich nicht, aber ich mag Deutsch und Sport.</p> <p>Mein Lieblingsfach ist Musik. Unsere Schule ist eine musikalische Schule, d.h. wir haben drei Mal in der Woche Musikunterricht. Ich spiele Klavier und bin im Schulchor. Unsere Musiklehrerin, Frau Weber, ist Fantastisch! Sie spielt sehr gut Klavier. Sie ist eigentlich meine Lieblingslehrerin.</p> <p>Am Samstag spiele ich Fußball auf dem Fußballplatz, denn am Samstag und am Sonntag habe ich keine Schule.</p> <p>Hast du am Samstag Unterricht? Was sind deine Lieblingsfächer? Schreib mir bald!</p> <p>Ciao Ben</p> <ul style="list-style-type: none"> • Wie heißt deine Schule? • Wie ist dein Stundenplan? • Wie heißen deine Lieblingsfächer? • Welche Fächer findest du langweilig? • Hast du am Samstag frei? Oder gehst du auch am Samstag in die Schule? 	5
4	<p>Bilde Sätze:</p> <p>a. brauche .ich .nein .den . nicht</p> <p>b. finde .ich .Krimis .interessant . nicht</p> <p>c. Keinen .Film .gibt . es.</p> <p>d. Ja .sehe .ich .fern .gern .so .</p> <p>e. Finden .wie . sie. Nachrichten .</p>	1x5=5
5	<p>Stell Fragen:</p> <p>a. _____? Nein danke, keinen Schokoriegel.</p> <p>b. _____? Einen Kaffee.</p> <p>c. _____? Nein, aber ich will es lernen.</p> <p>d. _____? Nein, Ich habe Hunger.</p> <p>e. _____? Ich möchte Stück Kuchen.</p>	1x5=5

6	Was passt zusammen? Verbinde. <table border="1" data-bbox="313 159 1230 464"> <tr> <td data-bbox="313 159 773 197">1. Bist du ein Fernsehfan?</td> <td data-bbox="773 159 1230 197">a) Zwei Stunden.</td> </tr> <tr> <td data-bbox="313 197 773 275">2. Wie viel Uhr pro Tag siehst du fern?</td> <td data-bbox="773 197 1230 275">b) Von 20.00 Uhr bis 21.30 Uhr.</td> </tr> <tr> <td data-bbox="313 275 773 352">3. Wie findest du die Sendung?</td> <td data-bbox="773 275 1230 352">c) Sport Sendungen.</td> </tr> <tr> <td data-bbox="313 352 773 390">4. Von wann bis wann.</td> <td data-bbox="773 352 1230 390">d) Ich finde sie toll.</td> </tr> <tr> <td data-bbox="313 390 773 428">5. Was siehst du gern?</td> <td data-bbox="773 390 1230 428">e) Ja, ich sehe sehr gern fern.</td> </tr> <tr> <td data-bbox="313 428 773 464"></td> <td data-bbox="773 428 1230 464"></td> </tr> </table>	1. Bist du ein Fernsehfan?	a) Zwei Stunden.	2. Wie viel Uhr pro Tag siehst du fern?	b) Von 20.00 Uhr bis 21.30 Uhr.	3. Wie findest du die Sendung?	c) Sport Sendungen.	4. Von wann bis wann.	d) Ich finde sie toll.	5. Was siehst du gern?	e) Ja, ich sehe sehr gern fern.			1x5=5
1. Bist du ein Fernsehfan?	a) Zwei Stunden.													
2. Wie viel Uhr pro Tag siehst du fern?	b) Von 20.00 Uhr bis 21.30 Uhr.													
3. Wie findest du die Sendung?	c) Sport Sendungen.													
4. Von wann bis wann.	d) Ich finde sie toll.													
5. Was siehst du gern?	e) Ja, ich sehe sehr gern fern.													
7	Ergänze: den, das, die Heute basteln wir ein Tier - Memory. Ich nehme _____ (1) Bleistift und _____ (2)Lineal und zeichne _____ (3)Spielkarten. Dann nehme ich _____ (4)Schere und schneide _____(5) Karten aus. Jetzt nehme ich Filzstifte und male Tiere auf die Karten: _____ (6)Kanarienvogel male ich grün und gelb, _____(7) Katze Schwarz, _____ (8)Goldfische rot, _____(9) Hamster braun. Nun spielen wir Memory: Jeder nimmt eine Karte und nennt _____ (10)Tier.	.5x10=5												



DELHI PUBLIC SCHOOL

SAIL TOWNSHIP, RANCHI

HALF YEARLY EXAMINATION (2022-23)

Class - VII
Time - 3 Hours

Subject - Hindi
Maximum Marks- 80

- निर्देश – (i) सभी प्रश्नों के उत्तर देना अनिवार्य है।
(ii) प्रश्न दो खण्डों में विभक्त है – खण्ड 'क', खण्ड 'ख'
(iii) प्रश्नोंत्तर क्रमानुसार लिखें।

अपठित गद्यांश (खण्ड – 'क')

प्रश्न 1. निम्नलिखित गद्यांशों के आधार पर प्रश्नों के उत्तर दीजिए :-

(1X5=5)

इंटरनेट एक ऐसा संचार साधन है जो पलों में विश्व के लोगों का संपर्क आपस में कर देता है। यह तकनीकी संचार साधन जैसे – टेलीफोन, दूरदर्शन, कंप्यूटर आदि से अधिक प्रभावशाली साधन है। विश्व – भर का कोई ऐसा ज्ञान नहीं जो इंटरनेट के माध्यम से जाना न जा सके। भाषा, विज्ञान, गणित, तकनीक, व्यापार-उद्योग, वाणिज्य, खेलकूद, फिल्मी दुनिया की जानकारी के अलावा आप किसी से भी चाहे वह संबंधी हो या मित्र या किसी रोजगार से जुड़ा सभी से आप छायांक (फोटो) सहित बात कर सकते हैं। विद्यार्थी तो घर बैठे-बैठे प्रत्येक विषय के बारे में जानकारी प्राप्त करके सक्षम हो सकते हैं। आजकल शायदियाँ भी इंटरनेट के माध्यम से होने लगी हैं। महिलाएँ तरह – तरह की घरेलू जानकारीयों इससे आसानी से प्राप्त कर सकती हैं। यह एक ऐसा माध्यम है जिसका कोई निश्चित समय नहीं 24 घंटे यह अपनी सुविधा प्रदान करता है। इसके द्वारा आप घर बैठकर ही खरीदारी कर सकते हैं, किसी भी तरह का बिल भर सकते हैं, रेलगाड़ी या वायु सेवा की टिकटें, आरक्षित करवा सकते हैं। बैंक के सभी प्रकार के कार्य करने में सक्षम हो सकते हैं। इतना उपयोगी होने के साथ – साथ दोष भी इंटरनेट के साथ हैं अश्लील सामग्री से भरपूर है इंटरनेट। बिना वजह इसकी गलत दिशाओं का प्रयोग कर बच्चे अपने मार्ग से भटक जाते हैं। अभिवावक यह जानने में भी असमर्थ रहते हैं कि उनके बच्चे कब, किनसे, किस तरह की बातें कर रहे हैं। यह कहना भी गलत नहीं कि सिक्के के दो पहलू होते हैं यदि इसमें इतनी अच्छाइयाँ हैं तो नाममात्र बुराइयाँ भी। हमें चाहिए कि यदि हम अपने लाभ हेतु इसका प्रयोग करते रहे तो यह बहुत लाभदायक है।

- (i) इंटरनेट कैसा संचार का साधन है?
(ii) इंटरनेट से संबंधी किससे बात कर सकते हैं?
(iii) घर बैठे कौन प्रत्येक विषय के बारे में जानकारी प्राप्त करते हैं
(iv) कौन, कैसी जानकारीयों आसानी से प्राप्त कर सकती है?
(v) अभिवावक क्या जानने में असमर्थ रहते हैं?

अपठित गद्यांश – 2

एक बार नेहरू जी रूस की यात्रा पर गए। वहाँ उनका बड़ा शानदार स्वागत हुआ। रूस के किसी गाँव का एक बच्चा भी उन्हें देखने आया, पर पहरेदारों ने उसे अंदर नहीं जाने दिया। बच्चा निराश होकर रोते – रोते वहीं बैठ गया। कुछ देर बाद नेहरू जी बाहर आए और बच्चे को रोता हुआ देखकर प्यार से पूछा, "तुम क्यों रो रहे हो?" बच्चे ने उत्तर दिया, "मैं एक गरीब लड़का हूँ और दूर के एक गाँव से नेहरू जी को देखने आया हूँ, पर पहरेदार ने मुझे अंदर नहीं जाने दिया।" नेहरू जी ने फूलों का गुलदस्ता दे दिया। नेहरू जी ने उस बच्चे को एक पेन और फूलों का गुलदस्ता दे दिया। नेहरू जी ने उस बच्चे को एक पेन और फोटो उपहार में देते हुए कहा, "मैं ही पंडित नेहरू हूँ और मुझे तुमसे मिलकर बहुत खुशी हुई। आशा है, तुम भारत का नाम सदा याद रखोगे।"

(1X5=5)

- (i) नेहरू जी किस देश की यात्रा करने गए थे?
(ii) बच्चे ने नेहरू जी को अपने रोने का क्या कारण बताया?

- (iii) नेहरू जी ने बच्चे को उपहार में क्या दिया?
 (iv) गद्यांश में से एक शब्द अनुनासिक के तथा एक शब्द अनुस्वार चिह्न वाले छोटकर लिखें।
 (v) पंडित नेहरू ने बच्चे से मिलकर क्या कहा?

व्यावहारिक व्याकरण

- प्रश्न 2. (i) राकेश अपने मित्र से फोन पर बात कर रहा है। भाषा के किस भेद के अन्तर्गत आता है? लिखें। (1)
 (ii) व्याकरण वर्ण, शब्द एवं वाक्य की रचना को ————— करता है। (1)
 (अव्यवस्थित / व्यवस्थित)
 (iii) कोंकणी भाषा की लिपि क्या है? लिखिए। (1)
 (iv) वर्तनी शुद्ध करें। :- (1)
 (क) सहाब (ख) दीवाली
 (v) वर्ण किसे कहते हैं? उदाहरण के साथ लिखिए। (2)
 (vi) काल परिवर्तित कर वाक्य पुनः लिखें :- (2)
 (क) शीला खाना खाती है। (भूत काल)
 (ख) सरिता पुस्तक पढ़ रही थी। (भविष्यत् काल)
 (vii) दिए गए शब्दों के दो – दो पर्यायवाची शब्द लिखें। (2)
 (क) इंद्र (ख) आँख
 (viii) दिए गए शब्दों के लिंग बदलकर पुनः लिखें। (2)
 (क) नाई (ख) पुजारिन
 (ix) दिए गए शब्दों के विलोम शब्द लिखें। (2)
 (क) चंचल (ख) गत
 (x) निम्नलिखित शब्दों में से मूल शब्द एवं उपसर्ग अलग करके लिखें। (2)
 (क) निर्जल (ख) अतिरिक्त
 (xi) दिए गए 'अनेक शब्दों के लिए एक शब्द' लिखिए। (2)
 (क) जिसकी उपमा न हो (ख) जो दिखाई न दे।
 (xii) दिए गए शब्दों के दो – दो अनेकार्थक शब्द लिखिए। (2)
 (क) गुण (ख) सारंग

पठित – पद्यांश

प्रश्न 3. पठित पद्यांश को ध्यानपूर्वक पढ़कर प्रश्नों के उत्तर दें :-

(1×3=3)

हम बहता जल पीने वाले
 मर जाएँगे भूखे-प्यासे
 कहीं भली है कटुक निबौरी
 कनक – कटोरी की मैदा से।
 स्वर्ण – शृंखला के बंधन में
 अपनी गति, उड़ान सब भूले।।

- (i) कविता की इन पंक्तियों में, पंछी कैसा जल पीना चाहते हैं?
 (ii) पंछी को खाने में क्या पसंद है?
 (iii) पंछी किस बंधन में जकड़े हुए हैं?

प्रश्न 4. निम्नलिखित पठित गद्यांश को पढ़कर पूछे गए प्रश्नों के उत्तर दीजिए :-

(1X3=3)

कालिदास के विरही यक्ष ने अपने मेघदूत से कहा था – वेत्रवती (बेतवा) नदी का प्रेम का प्रतिदान देते जाना, तुम्हारी वह प्रेयसी तुम्हें पाकर अवश्य ही प्रसन्न होगी। यह बात इन चंचल नदियों को देखकर मुझे अचानक याद आ गई और सोचा कि शायद उस महाकवि को भी नदियों का सचेतन रूपक पसंद था।

- (i) कालिदास के विरही यक्ष ने किससे क्या कहा?
- (ii) महाकवि को क्या पसंद था?
- (iii) दिए गए गद्यांश में से अनुस्वार के चिह्न वाले दो शब्द चुनकर लिखिए।

खण्ड – 'ख' वर्णनात्मक

प्रश्न 5. निम्नलिखित प्रश्नों के उत्तर एक वाक्य में लिखिए :-

(1X5=5)

- (i) दादी माँ कहानी के लेखक का नाम लिखिए।
- (ii) 'हिमालय की बेटियाँ' पाठ हिन्दी साहित्य के किस विधा के अन्तर्गत आता है?
- (iii) 'शाम एक किसान' कविता में किस ऋतु का वर्णन किया गया है?
- (iv) मिठाई वाला पुनः मुरली लेकर कब आता है?
- (v) बिपति और बादर के हिन्दी रूप लिखिए।

प्रश्न 6. निम्नलिखित लघु प्रश्नों के उत्तर यथा सम्भव अपने शब्दों में दें :-

(2X5=10)

- (i) दादी माँ का कौन-सा पक्ष आपको सबसे अच्छा लगता है और क्यों?
- (ii) 'हिमालय की बेटियाँ' पाठ में हिमालय और समुद्र को लेखक ने क्या कहा है?
- (iii) 'शाम एक किसान' कविता के कवि का नाम लिखिए।
- (iv) 'अब इस बार ये पैसे न लूँगा' कहानी के अंत में मिठाई वाले ने ऐसा क्यों कहा?
- (v) रहीम दास जी ने धरती और ऋतु के उदाहरण से मनुष्य को क्या सीख दी है?

प्रश्न 7. निम्नलिखित प्रश्नों के उत्तर विस्तार से लिखें :-

(3X3=9)

- (i) किसी एक दोहे का सन्दर्भ सहित अर्थ लिखें :-
जाल परे जल जात बहि, तजि मीनन को मोह।
रहिमन मछरी नीर को, तरु न छँड़ति छोह॥ 1॥
अथवा
तरुवर फल नहि खात है, सरवर पियत न पान
कहि रहीम परकाज हित, सम्पति – सचहिं सुजान॥ 2॥
- (ii) कविता में दिए गए प्राकृतिक दृश्यों की एकरूपता किनसे की गयी है लिखिए :-
(i) पहाड़ (ii) आकाश (iii) पलाश के लाल-लाल फूल
- (iii) मिठाईवाले में वे कौन से गुण थे जिनकी वजह से बच्चे तो बच्चे, बड़े भी उसकी ओर खिंचे चले आते थे?

बाल महाभारत पर आधारित प्रश्न

प्रश्न 8. किन्हीं पाँच प्रश्नों के उत्तर लिखिए :-

(2X5=10)

- (i) पांडव के पोते का क्या नाम था? पांडवों को किस राज्य में रहने की अनुमति मिली?
- (ii) देवव्रत की क्या विशेषता है?

- (iii) शूरशेन कौन थे? उनकी पहली सन्तान का नाम क्या था?
(iv) विदुर की विशेषताएँ लिखिए।
(v) सत्यवती के पुत्रों का नाम लिखिए।
(vi) कुन्ती पाठ में पाँचों पांडव का जन्म कहाँ हुआ? जंगल में हिरण के रूप में कौन विहार कर रहे थे?
(vii) केवट राज ने राजा (शान्तनु) के सामने क्या शर्त रखी?

लेखन – कार्य

प्रश्न 9. पुस्तकें मँगवाने के लिए सम्पादक को पत्र लिखिए। (5)

अथवा

विद्यालय में क्रिकेट मैच प्रतियोगिता कराने हेतु प्राचार्य को पत्र लिखें।

प्रश्न 10. किसी एक विषय पर अनुच्छेद लिखिए :- (5)

(क) मोबाइल :- संकेत बिंदु –

- भूमिका
- लाभ – हानि
- निष्कर्ष

(ख) लाल बहादुर शास्त्री :-

- भूमिका
- जीवन परिचय
- उपलब्धि
- निष्कर्ष

(ग) अनुशासन का महत्त्व :-

- भूमिका
 - महत्त्व
 - निष्कर्ष
-



DELHI PUBLIC SCHOOL
SAIL TOWNSHIP, RANCHI
HALF YEARLY EXAMINATION (2022-23)

Class - VII
Time - 90 Minutes

Subject - Japanese
Maximum Marks- 40

1. Write the following Hiragana characters in Katakana. [2]
 - 1) の
 - 2) び
 - 3) ぼ
 - 4) し

2. Write the following names of the places in Katakana. [2]
 - 1) New York
 - 2) Brazil

3. Answer the following questions in Japanese (Hiragana & Katakana). [3]
 - 1) いまはなにをしていますか?
 - 2) あした、なにをしますか?
 - 3) きのうのよるなにをしましたか?

4. Answer the following questions. [3]

ヘマルさんはきょう、やすみですね？

はい、そうです。

 - 1) Read the above conversation and answer, why is “ね？”used at the end of the sentence?
(Answer in English.)
 - 2) Which particle is used at the end of the sentence to inform something?
でぐちは、あつちです _____ (か？ or よ。) (Answer in Hiragana.)
 - 3) Which particle is used at the end of the sentence to ask a question?
これはなんです _____ (ね。 or か？) (Answer in Hiragana.)

5. Write your name in Katakana. [1]
 - 1) わたしのなまえは _____ です。

6. Write the correct form of i-adjective in Japanese(Hiragana). [2]

- 1) あしたともだちと () えいがをみます。 (interesting)
- 2) きのうちたべたおすしは () です。 (was delicious)
- 3) () ねこがねています。 (cute)
- 4) きのうち () カメラをかいました。 (new)

7. Rearrange the given jumbled words and make meaningful sentences. [4]

- 1) かしゅ / ジョン / を / いう / と / います / か ? / して
- 2) います。 / ください。 / しらべて / いま / まって / すこし
- 3) よ / きのうち / しゃしん / とった / だ。
- 4) にほん / こっき / です。 / は / これ / の

8. Write the following sentences in Japanese(Hiragana). [4]

- 1) I have a bicycle.
- 2) My brother is sleeping.
- 3) I am listening to music.
- 4) What are you doing?

9. Translate the following sentences in English. [5]

- 1) きのうちかぞくみんなでしんせきのいえにいきました。
- 2) もうすぐじゅぎょうがはじまりますよ。
- 3) おかあさんはきんじょのひととはなしています。
- 4) わたしはいつも8じにおきます。
- 5) ともだちのスピーチをきいています。

10. Write the following sentences in [～たことがあります] form. [3]

- 1) にほんでしんかんせんにのりました。
- 2) わたしは、いっかだけさしみをたべました。
- 3) インドでおてらにいきましたか。

11. Write a paragraph on a given topic below. Write a minimum of five sentences in Japanese. [5]

“My daily routine”

or

“My summer vacation with family”

リナさんはかぞくとランチにすんでいます。まいにちがっこうへいきます。

きのう、がっこうはやすみでした。だから、きのう、リナさんはともだちとこうえんへいきました。そこでかわいいいぬを見つけました。ふたりはくらくらするまでいぬとあそびました。そのあといえにかえりました。おかあさんがつくったごはんをたべました。とてもおいしかったようです。

きょう、がっこうへいきました。たくさんのしゅくだいをもらいました。あしたは、すうがくのしけんがあります。いまからすうがくをべんきょうします。

- 1) リナさんはだれとどこにすんでいますか。
 - 2) リナさんはきのう、ともだちとどこへいきましたか。
 - 3) リナさんはこうえんでなにをみましたか。
 - 4) リナさんはいまからなにをしますか。
-



DELHI PUBLIC SCHOOL
SAIL TOWNSHIP, RANCHI
HALF YEARLY EXAMINATION (2022-23)

Class - VII
Time - 3 Hours

Subject - Mathematics
Maximum Marks- 80

Attempt all questions. However there are internal choices. Rough work to be done in the right margin.

General Instructions

1. The Question paper contains two parts :-Part – I& Part – II.
 2. Both parts have internal choices.
 3. Part I consists of two sections.
 4. Section 1 has 16 questions of 1 mark each. Internal choice is there in 5 questions.
 5. Section 2 has 4 questions on case study. Each case study has case based 5 sub parts. Examinee has to be attempt any 4 sub parts out of 5 i.e. 16 marks.
 6. Question no. 21 to 26 are very short answer type questions of 2 marks each i.e. 12 marks.
 7. Question no. 27 to 33 are short answer type questions of 3 marks each i.e. 21 marks.
 8. Question no. 34 to 36 are long answer type questions of 5 marks each i.e. 15 marks.
 9. Internal choices is provided in 2 questions of 2 marks, 2 questions of 3 marks each and 1 question of five marks.
-

Part - I

Section – A (1 x 16=16)

1. Write the additive identity and multiplicative identity for integers.
2. Find : $70 \times (-19) + (-1) \times 70$ using distributive property.
3. Evaluate : $13 \div [(-2) + 1]$

OR

3. What must be subtracted from -7 to obtain -15 ?
4. Write four equivalent fractions of $\frac{3}{5}$.
5. Find (a) $\frac{2}{5}$ of 40 and (b) $\frac{5}{9}$ of 48.

6. Arrange in descending order :

$$\frac{5}{14}, \frac{5}{9}, \frac{5}{6}, \frac{5}{12}$$

OR

6. Simplify : $\frac{8}{9} - \frac{7}{12}$
7. Write the equation for the statements :
 - (a) If you subtract 5 from 6 times a number, you get 7.
 - (b) One third of a number plus 5 is 8.

8. The runs scored by 11 members of a cricket team are 25, 39, 53, 18, 65, 72, 0, 46, 31, 08, 34. Find the median score.
9. Find the mean of the numbers : 7.6, 6.8, 8.5, 9.4, 5.9, 6.4, 9.1 and 4.7.

OR

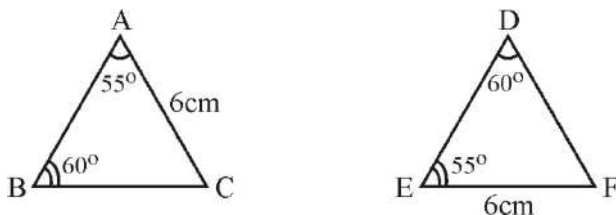
9. Find the mean of first five prime numbers.
10. Find the angle which is its own compliment.
11. Find the angle which is double of its supplement.
12. In $\triangle ABC$, $\angle A = 35^\circ$, $\angle B = 65^\circ$, find the measure of $\angle C$.
13. Two angles of a triangle are equal and the third angle measures 70° . Find the measure of each of the unknown angles.

OR

13. Draw a triangle in which two altitudes of the triangle are two of its sides.
14. State the correspondence between the vertices, sides and angles of the pair of congruent triangles if $\triangle ABC \cong \triangle EFD$.
15. When are two circles congruent ?

OR

15. When are all squares congruent ?
- 16.



Applying congruence criterion, if these triangles are congruent, write the steps in symbolic form.

Part - I

Section – B (4 x 4=16)

CASE STUDY BASED

Attempt **any four** subparts out of five subparts.

17. Read the passage and answer four out of five questions given below :-

In a class of strength 60, 20 students like Mathematics, 15 students like Physics, 25 students like chemistry.

- (i) The fraction of students who like Mathematics is

(a) $\frac{1}{2}$ (b) $\frac{1}{3}$ (c) $\frac{1}{4}$ (d) $\frac{12}{5}$

- (ii) The fraction of students who like Physics is

(a) $\frac{1}{2}$ (b) $\frac{1}{3}$ (c) $\frac{1}{4}$ (d) $\frac{12}{5}$

- (iii) The fraction of students who like Chemistry is

(a) $\frac{1}{2}$ (b) $\frac{1}{3}$ (c) $\frac{1}{4}$ (d) $\frac{5}{12}$

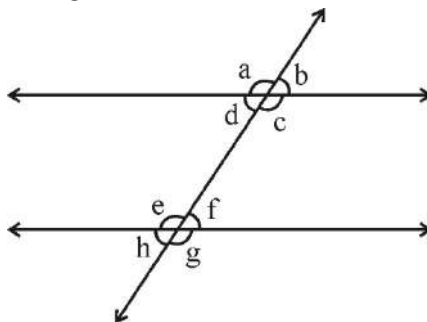
- (iv) The fraction $\frac{1}{12}$ is

- (a) $>\frac{7}{12}$ (b) $<\frac{7}{12}$ (c) $=\frac{8}{12}$ (d) None of these
- (v) Find the fraction of students who like both Mathematics and Physics
- (a) $\frac{1}{2}$ (b) $\frac{7}{12}$ (c) $\frac{5}{12}$ (d) $\frac{3}{12}$

18. The marks in a subject for 12 students are as follows :-
31, 37, 35, 38, 42, 23, 17, 18, 35, 25, 35, 29

For the given data,

- (i) The mean is
(a) 25 (b) 30.41 (c) 33 (d) 35
- (ii) The mode is
(a) 25 (b) 30.41 (c) 33 (d) 35
- (iii) The median is
(a) 25 (b) 30.41 (c) 33 (d) 35
- (iv) The Range is
(a) 25 (b) 30.41 (c) 33 (d) 35
- (v) How many students have marks more than mean marks ?
(a) 7 (b) 6 (c) 8 (d) 5
19. An equation is a mathematical sentence that uses an equality sign to show that two expressions have the same value. To solve an equation that contains a variable, that makes the equation true, this value of the variable is called the solution of the equation. Read the problems carefully and solve the equations :
- (i) The solution of the equation $3x + 5 = 0$ is
(a) $\frac{5}{3}$ (b) -5 (c) $-\frac{5}{3}$ (d) 5
- (ii) -1 is not a solution of the equation
(a) $x + 1 = 0$ (b) $x - 1 = 2$ (c) $2y + 3 = 1$ (d) $2p + 7 = 5$
- (iii) $2x + \underline{\hspace{2cm}} = 11$ has the solution -4
(a) 19 (b) 28 (c) 18 (d) 29
- (iv) One fourth of a number is 20 less than the number itself. The number is
(a) $\frac{80}{3}$ (b) $\frac{80}{9}$ (c) $\frac{40}{7}$ (d) $\frac{40}{3}$
- (v) 9 added to twice a number gives 13. The number is -
(a) 2 (b) 4 (c) 3 (d) 1
20. From the figure, name of the pair of angles asked -



- (i) The corresponding angles are -

- (a) $(\angle a, \angle e)$ (b) $(\angle b, \angle c)$ (c) $(\angle a, \angle d)$ (d) $(\angle e, \angle f)$
- (ii) The pair of co-interior allied angles are -
 (a) $(\angle e, \angle h)$ (b) $(\angle d, \angle e)$ (c) $(\angle a, \angle d)$ (d) $(\angle f, \angle g)$
- (iii) The pair of interior alternate angles are -
 (a) $(\angle a, \angle h)$ (b) $(\angle b, \angle g)$ (c) $(\angle d, \angle f)$ (d) $(\angle c, \angle f)$
- (iv) The pair of vertically opposite angles are -
 (a) $(\angle b, \angle d)$ (b) $(\angle f, \angle g)$ (c) $(\angle g, \angle h)$ (d) $(\angle c, \angle f)$
- (v) The linear pair of angles are -
 (a) $(\angle d, \angle e)$ (b) $(\angle c, \angle f)$ (c) $(\angle a, \angle b)$ (d) $(\angle d, \angle f)$

Part - II

Section - C (2x 6 = 12)

21. Match the following :

<u>Column I</u>	<u>Column II</u>
(a) $a \div (-1)$	(i) a
(b) $1 \div a$	(ii) 1
(c) $(-a) \div (-a)$	(iii) Not an integer
(d) $a \div (+1)$	(iv) $-a$

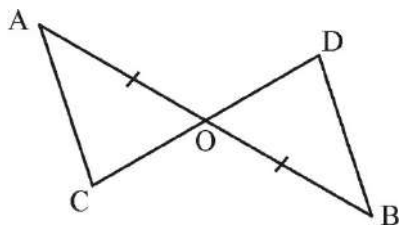
OR

21. When the integers 10, 0, 5, -5, -7 are arranged in descending or ascending order, then find out the integer which will be in the middle.
22. Find $2\frac{2}{5} \div 2\frac{1}{5}$
23. Find the probability of getting a number greater than 2 on throwing a die once.
24. 9 added to twice a number gives 13. Find the number.
25. Solve : $3(x + 3) - 2(x - 1) = 5(x - 5)$

OR

25. Solve : $16(3x - 5) - 10(4x - 8) = 40$
26. In the Figure, $AO = OB$

$\angle A = \angle B$



Show that $\triangle AOC \cong \triangle BOD$.

Section - D (3x7 = 21)

27. Simplify : $118 - [121 \div (11 \times 11) - (-4) - \{3 - \overline{9 - 2}\}]$

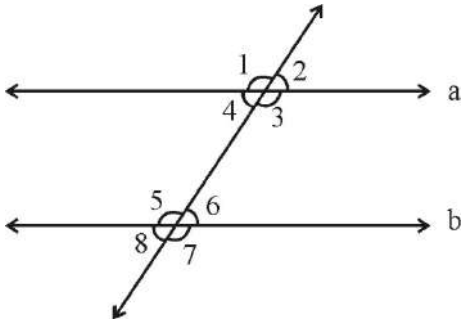
28. The cost of $5\frac{2}{5}$ kg of sugar is Rs. $101\frac{1}{4}$, find its cost per kg.

OR

28. The product of two numbers is $20\frac{5}{7}$. If one of the numbers is $6\frac{2}{3}$, find the other.

29. Rahul's father is thrice as old as Rahul. After 12 years he will be just twice his son. Find their present ages.

30. State the property that is used in the following statements :-



(i) If $a \parallel b$, then $\angle 1 = \angle 5$.

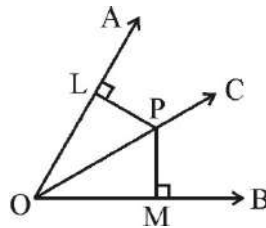
(ii) If $\angle 4 = \angle 6$, then $a \parallel b$.

(iii) If $\angle 4 + \angle 5 = 180$, then $a \parallel b$.

31. If the sides of a triangle are produced in order, prove that the sum of the exterior angles so formed is 360° .

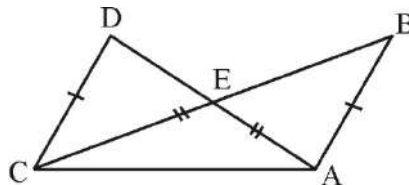
32. Prove the Angle Sum Property that the sum of the angles of a triangle is 180° .

33. In figure, $PL \perp OA$, $PM \perp OB$ such that $PL = PM$. Prove that $\triangle PLO \cong \triangle PMO$ giving suitable reasons.



OR

33. In the figure, $AB = CD$, $AD = BC$, Prove that $\triangle ADC \cong \triangle CBA$.



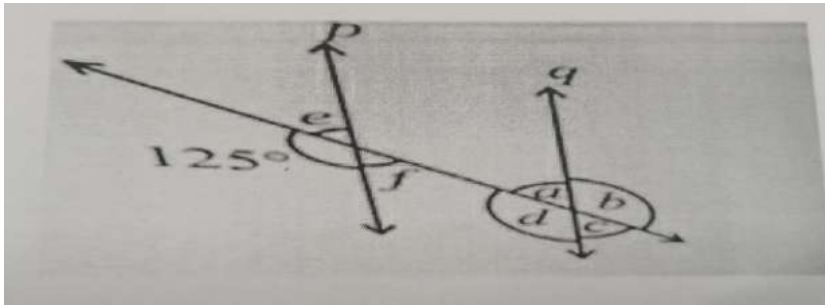
Section – E (5 x 3 = 15)

34. In a public library, the librarian made the following observations in particular week.

Days	Mon	Tues.	Wed.	Thurs.	Fri.	Sat.
Newspaper Readers	350	400	500	450	550	450
Magazine Readers	200	450	300	250	100	50

- (i) Draw a double bar graph choosing an appropriate scale.
 - (ii) On which day, the number of readers in the library was maximum ?
 - (ii) What is the mean number of magazine readers per day ?
35. PQRS is a quadrilateral in which diagonals PR and QS intersect in O. Show that $(PQ+ QR+ RS+SP) > (PR+QS)$.
36. The diagonals of a rhombus measure 16 cm and 30 cm. Find its perimeter.

OR



In the adjoining figure, $p \parallel q$. Find the unknown angles, a, b, c, d, e, f.



DELHI PUBLIC SCHOOL
SAIL TOWNSHIP, RANCHI
HALF YEARLY EXAMINATION (2022-23)

Class - VII
Time - 90 Minutes

Subject - Physical Education
Maximum Marks- 50

General Instructions:-

1. The question paper consist of 50 objective question.
 2. All questions are compulsory.
 3. All questions carrying one mark (1×50 =50)
-

1. What is a sprain?
 - a. Broken ankle
 - b. Ligament that are over stretched
 - c. Diabetes
 - d. Overuse injury
2. Patanjali also wrote about yoga in..... BC
 - a. 137 BCE
 - b. 147 BCE
 - c. 149 BCE
 - d. 142 BCE
3. Weight of the Volleyball is
 - a. 260 - 280 gm
 - b. 240 - 250 gm
 - c. 300 - 350 gm
 - d. 200 - 220 gm
4. In Sanskrit "Yoga" means.
 - a. To multiply
 - b. To understand
 - c. To unite
 - d. To comprehend
5. The official Mascot of Common Wealth Games 2022 is ?
 - a. Shera
 - b. Perry
 - c. Goldic
 - d. Kenyo
6. Energy comes from.....
 - a. Carbohydrates
 - b. Vitamin
 - c. Mineral
 - d. Protein

7. The bone is broken and damage the internal organs is called as
 - a. Compound fracture
 - b. Complicated fracture
 - c. Greenstick fracture
 - d. Simple fracture
8. Why is it important to play a game/sports using the correct rules and techniques?
 - a. The rules are there to keep it fair and as safe as possible for all the players.
 - b. The rules makes the game boring
 - c. The rules makes it easier for the weak team to win
 - d. The technique make it to avoid injuries
9. The body requires onlyof protein per pound of the ideal body weight.
 - a. 1.36 gm
 - b. 0.36 gm
 - c. 0.26 gm
 - d. 0.40 gm
10. How many sports/games were played in Common Wealth Games 2022 ?
 - a. 19
 - b. 29
 - c. 25
 - d. 31
11. Which disease is caused by the deficiency of vitamin B5 ?
 - a. Beri - Beri
 - b. Pellagra
 - c. Rickets
 - d. Night blindness
12. In which game did India won gold medal for the first time in Common Wealth Games 2022 ?
 - a. Men's Lawn Ball
 - b. Women's Lawn Ball
 - c. Women's Hockey
 - d. Men's Hockey
13. What is the other name of vitamin B3 ?
 - a. Riboflavin
 - b. Biotin
 - c. Niacin
 - d. Thiamin
14. Who compiled "Yoga Sutra"
 - a. Patanjali
 - b. Gheranda
 - c. Svatmaramia
 - d. None of the above
15. Which vitamin is derived from the word Arcorbic Acid.
 - a. Vitamin E
 - b. Vitamin K
 - c. Vitamin C
 - d. Vitamin B

16. Which of the following is considered as a complete protein food
 - a. Almond
 - b. Horse gram
 - c. Soya bean
 - d. Cashew nuts
17. How many countries had participated in Common Wealth Games 2022 ?
 - a. 56
 - b. 65
 - c. 71
 - d. 72
18. Which one of these connects muscles to bones ?
 - a. Tendon
 - b. Muscles
 - c. Bones
 - d. Ligament
19. Select safety precautions that can help you avoid injuries during physical activity.
 - a. Warm up, Cool down
 - b. Ride a bike with no helmet, wear baggy clothes
 - c. Horse play, wearing tight clothes
 - d. No helmet, no worries
20. What is the cause of sports injuries
 - a. Proper warm up
 - b. Proper conditioning
 - c. Lack of fitness
 - d. Proper stretching
21. Strains are injuries to
 - a. Ligament
 - b. Tendon or muscles
 - c. Bones
 - d. Skin
22. "Yoga is attaining the pose" written by:-
 - a. Patanjali
 - b. Maharishi ved vyas
 - c. Kapil Manu
 - d. Arastu
23. How many playing members are there in each team in Volleyball?
 - a. 6
 - b. 10
 - c. 5
 - d. 8
24. Which Asana is useful in increasing height
 - a. Padmasana
 - b. Virasana
 - c. Mandukasan
 - d. Trikonasana

25. Which Asana is helpful in relief of constipation?
- Pawanmuktasana
 - Konasana
 - Bhujangasana
 - Padmasana
26. Who carried the Indian Flag during the opening ceremony of the Common Wealth Games 2022 ?
- Lovlina borgohain and Manpreet Singh
 - P.V Sindhu and Manpreet Singh
 - Mirabai chanu
 - None of the above
27. The term "Dolphin Kick" is associated with which of the following game ?
- Badminton
 - Squash
 - Swimming
 - Golf
28. Fractures those are commonly seen in children is known as.....
- Simple fracture
 - Compound fracture
 - Greenstick fracture
 - Complicated fracture
29. In which way do the teams rotation takes place in Volleyball ?
- Clock wise
 - Counter clock wise
 - They do not rotate
 - None of the above
30. How many gold medals won by India in Common Wealth Games 2022 ?
- 22
 - 20
 - 21
 - 18
31. Common Wealth Games 2022 was started on.....
- 24 July
 - 27 July
 - 28 July
 - 30 July
32. Who clinched India's 2nd Gold medal in the men's 67 kg event at the Common Wealth Games 2022 ?
- Vikas thakur
 - Deepak lather
 - Jeremy lalrinnunga
 - Harshad wadekar
33. Which Yogic Asana is beneficial for relaxation ?
- Kapalabharti
 - Shavasana
 - Chakrasana
 - Bhujangasana

34. The player specialized in defence in Volleyball is known as.....
- Libero
 - Freestyle
 - Blocker
 - None of the above
35. Who clinched India's first Gold medal in the Common Wealth Games women's 2022 ?
- Khumukcham Sanjita Chanu
 - Mirabai chanu
 - Santoshi Matsa
 - Bindyarani Devi
36. Bajrang Punia, who won the gold medal for India in the Common Wealth Games 2022 is associated with which sports?
- High Jump
 - Triple Jump
 - Javelin Throw
 - Wrestling
37. Indian Lawn Ball womens team made history by winning which medal at the Common Wealth Games 2022 ?
- Silver
 - Gold
 - Bronze
 - None of the above
38. The Indian badminton mixed team won which medal at the Common Wealth Games 2022 ?
- Gold
 - Bronze
 - Silver
 - None of the above
39. Vikas thakur who won a silver medal for India at Common Wealth Games 2022 is associated with which sports?
- Weight lifting
 - Badminton
 - Judo
 - Boxing
40. How many time outs are taken by the volleyball team in each set
- 1
 - 2
 - 3
 - 4
41. Who has won India's first ever medal in the High Jump at Common Wealth Games 2022 ?
- Hima Das
 - Tejaswini Shankar
 - M Sree Shankar
 - Dutee Chand
42. Volleyball Federation of India was established in.....
- 1947
 - 1953
 - 1951
 - 1955

43. What is the position of India in Common Wealth Games 2022 ?
- 5th
 - 7th
 - 4th
 - 9th
44. Father of Volleyball was
- William G. Morgan
 - C.C.Cowell
 - Cobertein
 - None of the above
45. How many sets are in Volleyball game?
- 5
 - 3
 - 6
 - 7
46. Avinash Sable has won the Silver medal at the Common Wealth Games in which sports ?
- Javelin Throw
 - High Jump
 - Steeplechase (3000m)
 - Long Jump
47. What is the height of Antenna from the net in Volleyball ?
- 1 mt
 - 1.20 mt
 - 1.8 mt
 - 80 cm
48. Water is made up of hydrogen and oxygen elements in the ratio.....
- 1:2
 - 2:1
 - 2:00
 - None of the above
49. Which day is celebrated as "International Yoga Day" ?
- June 20
 - June 21
 - June 22
 - June 23
50. Nutrient are divided into groups.
- 2
 - 4
 - 5
 - 6
-



DELHI PUBLIC SCHOOL
SAIL TOWNSHIP, RANCHI
HALF YEARLY EXAMINATION (2022-23)

Class - VII
Time - 90 Minutes

Subject - Sanskrit
Maximum Marks- 40

खण्ड - 'क'

प्रश्न 1. अधोलिखितं पद्यांशं पठित्वा प्रश्नानाम् उत्तराणि लिखत :-

मातेव रक्षति पितेव हिते नियुङ्क्ते,
कान्तेव चाभिरमयति अपनीय खेदम् ।
लक्ष्मीं तनोति वितनोति च दिक्षु कीर्तिम्,
किं किं न साधयति कल्पलतेव विद्या ।

(क) एकपदेन उत्तरत :-

(1/2X2=1)

(i) का लक्ष्मीं तनोति?

(ii) विद्या कीदृशी इव अस्ति?

(ख) एकवाक्येन उत्तरत :-

(1X2=2)

(i) विद्या का इव रक्षति?

(ii) विद्या कीर्तिम् कृत्र वितनोति?

(ग) उचितं विकल्पं चिनुत :-

(1/2X4=2)

(i) 'रक्षति' अत्र कः लकारः प्रयुक्तः?

(अ) लट्

(ब) लृट्

(स) लङ्

(द) लोट्

(ii) 'दिक्षु' अत्र का विभक्ति प्रयुक्ता?

(अ) पंचमी

(ब) षष्ठी

(स) सप्तमी

(द) संबोधन

(iii) 'जनकः' इति पदस्य कः अन्यः पर्यायः अत्र प्रयुक्तः?

(अ) माता

(ब) पिता

(स) कान्ता

(द) लक्ष्मी

(iv) 'कल्पलता' अत्र किम् लिंगं प्रयुक्तं?

(अ) पुल्लिंगं

(ब) स्त्रीलिंगं

(स) नपुंसकलिंगं

(द) अन्यलिंगं

प्रश्न 2. अधोलिखितं गद्यांशं पठित्वा प्रश्नानाम् उत्तराणि लिखत :-

अथ चित्रग्रीवं सपरिवारं पाशबद्धमवलोक्य हिरण्यकः सविषादमिदमाह - भोः किमेत् । स आह - भोः जानासि किं पृच्छसि । साम्प्रतं त्वं झटिति पाशच्छेदं कुरु । एतत् श्रुत्वा सर्वेषां पाशच्छेदं कृत्वा हिरण्यकः चित्रग्रीवमाह स्वाश्रयं प्रति गम्यताम् अधुना ।

(क) एकपदेन उत्तरत :-

(1/2X2=1)

(i) कः पाशबद्धं आसीत्?

(ii) कः चित्रग्रीवं आह?

(ख) एकवाक्येन उत्तरत :-

(1X2=2)

(i) 'साम्प्रतं एवं झटिति पाशच्छेदं कुरु' इति कः कथयति?

(ii) हिरण्यकः किम् अकरोत्?

(ग) उचितं विकल्पं चिनुत :-

(1/2X4=2)

(i) 'जानासि' अत्र कः लकारः प्रयुक्तः?

(अ) लट्

(ब) लृट्

(स) लङ्

(द) लोट्

(ii) 'स्वगृहम्' इति पदस्य कः अन्यः पर्यायः अत्र प्रयुक्तः?

(अ) सपरिवारं

(ब) सविषादं

(स) स्वाश्रयं

(द) सर्वेषां

(iii) 'पृच्छसि' अत्र किम् वचनम् प्रयुक्तम्?

(अ) एकवचनं

(ब) द्विवचनं

(स) बहुवचनं

(द) अन्यवचनं

(iv) 'स्वाश्रयं' अत्र किम् लिंगं प्रयुक्तम्?

(अ) पुल्लिङ्गं

(ब) स्त्रीलिङ्गं

(स) नपुंसकलिङ्गं

(द) अन्यलिङ्गं

खण्ड - 'ख'

प्रश्न 3. रेखांकितानि आधृत्य प्रश्नरचनां कुरुत :-

(1X4=4)

(क) विहगाः वटवितपे प्रतिवसन्ति स्म ।

(ख) सपरिवारः चित्रग्रीवः जाले निबद्धः ।

(ग) स एव पाशच्छेदं करिष्यति ।

(घ) चित्रग्रीवः सपरिवारः स्वाश्रयमगच्छत् ।

प्रश्न 4. सन्धिविच्छेदं कुरुत :-

(1/2X8=4)

(क) अत्रान्तरे = ----- + -----

(ख) व्यसनावस्था = ----- + -----

(ग) स्वाश्रयम् = ----- + -----

(घ) न्यवारयत् = ----- + -----

प्रश्न 5. मञ्जूषात् पदं चित्वा रिक्तस्थानं पूरयत :-

(1/2X6=3)

(मञ्जूषा - प्रहरति, निर्गच्छन्ति, वितरति, प्रणमन्ति, विहसतः, उपविशाम)

(क) प्रधानाचार्या छात्रासु मिष्टान्नं ----- ।

(ख) शिशू मातरं दृष्ट्वा ----- ।

(ग) रजकः गर्दभं लगुडेन ----- ।

(घ) शिष्याः गुरुं ----- ।

(ङ) पिपीलिकाः विलात् ----- ।

(च) वयं आसने ----- ।

प्रश्न 6. अधोलिखितानां पदानां लिंगं, विभक्ति, वचनं च लिखत :-

(1X3=3)

	पदानि	लिंगम्	विभक्तिः	वचनम्
(क)	दिक्षु	-----	-----	-----
(ख)	विनयात्	-----	-----	-----
(ग)	धनम्	-----	-----	-----

प्रश्न 7. श्लोकांशान् योजयत :-

(1/2X4=2)

	क	ख
(i)	अभ्यासेन तु कौन्तेय	मोक्षयिष्यामि मा शुचः
(ii)	जातस्य ध्रुवो मृत्युः	वैराग्येण च गृह्यते
(iii)	स्वधर्मे निधनं श्रेयः	ध्रुवं जन्म मृतस्य च
(iv)	अहं त्वां सर्वपापेभ्यः	परधर्मो भयावहः

प्रश्न 8. उपयुक्तकथनानां समक्षम् 'आम्' अनुपयुक्त कथनानां समक्षं 'न' लिखत :-

(1/2X4=2)

(क)	मनः दुर्निग्रहम् अस्ति। = -----
(ख)	लोभः नरकस्य द्वारम् नास्ति। = -----
(ग)	मृतस्य जन्म ध्रुवं नास्ति। = -----
(घ)	स्वधर्मे निधनं श्रेयः। = -----

प्रश्न 9. प्रकृति – प्रत्ययौ पृथक् कुरुत :-

(1/2X4=2)

	शब्द	प्रकृतिः	प्रत्ययः
	यथा – मिलित्वा =	मिल्	क्त्वा
(क)	भूत्वा =	-----	-----
(ख)	दृष्ट्वा =	-----	-----

प्रश्न 10. उदाहरणानुसारं स्म शब्दं योजयित्वा भूतकालिक क्रिया स्वयत :-

(1/2X4=2)

	यथा – अवसत् =	वसति स्म
(क)	अभवत् =	-----
(ख)	अवदत् =	-----
(ग)	अनयत् =	-----
(घ)	अपृच्छत् =	-----

प्रश्न 11. धातुरूपं प्रयोगं कुरुत :-

(1/2X8=4)

(क)	तौ विद्यालयं -----	(गम् लृट् लकारे)
(ख)	सः पुस्तकं -----	(पठ् लट् लकारे)
(ग)	ते छात्राः -----	(अस् लट् लकारे)
(घ)	त्वम् जलं -----	(पा लङ् लकारे)
(ङ)	युवाम् पुस्तकं -----	(पठ् विधिलिङ् लकारे)
(च)	यूयम् विद्यालयं -----	(गम् लट् लकारे)
(छ)	अहम् तत्र -----	(अस् लृट् लकारे)
(ज)	आवाम् जलं -----	(पा लृट् लकारे)

प्रश्न 12. शब्दरूपं लिखत :-

(1/2x8=4)

(क) अहम्	आवाम्	-----
(ख) माम्	आवाम्	-----
(ग) बालकम्	-----	बालकान्
(घ) पतिम्	पती	-----
(ङ) त्वया	युवाभ्यां	-----
(च) -----	युवाभ्यां	युष्मभ्यम्
(छ) अहम्	आवाम्	-----
(ज) बालकेन	बालकाभ्यां	-----



DELHI PUBLIC SCHOOL

SAIL TOWNSHIP, RANCHI

HALF YEARLY EXAMINATION (2022-23)

Class - VII
Time - 3 Hours

Subject - Science
Maximum Marks- 80

Attempt all questions. However there are internal choices. Rough work to be done in the right margin.

PHYSICS

Choose the most appropriate answer

[2x1 =2]

- Paheli and Boojho measured their body temperature. Paheli found her's to be 98.6°F and Boojho recorded 37°C . Which of the following statement is true?
 - Paheli has a higher body temperature than Boojho.
 - Paheli has a lower body temperature than Boojho.
 - Both have normal body temperature.
 - Both are suffering from fever.
- Which of the following is used as a side view mirror?
 - Plane mirror
 - Concave mirror
 - Convex mirror
 - Convex lens

Answer in one word/sentence

[2x1 = 2]

- Rajesh for observing dispersion of light, used light from laser torch to fall on a prism. Will he be able to observe a band of seven colours?
- State the principle of calorimetry.

Short answer questions

[3x2 = 6]

- State two similarities and two differences between the laboratory thermometer and the clinical thermometer.
- State the laws of reflection.
- John is observing his image in a plane mirror. The distance between the mirror and his image is 4 m. If he moves 1 m towards the mirror
 - What is the distance between john and his image?
 - Write any two uses of plane mirror.

Long answer questions

[4 x3 = 12]

- Sketch the image formation by a plane mirror for a point object.
 - The radius of curvature of a concave mirror is 7 cm. Calculate its focal length.

9. a. Convert 100 degree Celsius into Fahrenheit and Kelvin.
b. At a camp site there are tents of two shades – one made with black fabric and the other with white fabric. Which one will you prefer for resting on a hot summer afternoon? Give reason for your choice. Would you like to prefer the same tent during winter?
10. What is a virtual image? Give one situation where a virtual image is formed.
11. a. Define the process of radiation of heat.
b. Write any two properties of thermal radiation.

Very Long answer questions

[5 x 1 = 5]

12. a. Describe an experiment to show that heat travels from the hot end to the cold end of a metal rod.
b. Why wearing more layers of clothing during winter keeps us warmer than wearing just one thick piece of clothing?

OR

- a. Describe an activity to show that light travels in a straight line.
b. Write any two differences between a convex and concave mirror.

CHEMISTRY

Section A

[1×5=5]

1. A solution turns phenolphthalein pink .What is the nature of the solution?
2. Write the chemical formula of ash formed when Magnesium burns in oxygen?
3. What is an alkali ?

Choose the correct answer

4. The acid present in milk is
a. lactic acid
b. nitric acid
c. formic acid
d. Tartaric acid
5. The setting of curd is a
a. Chemical reversible change
b. Physical Irreversible change
c. Chemical Irreversible change
d. Physical reversible change

Section B

[2×4=8]

6. What colour do the following indicators turn to when added to a base
a. Red cabbage juice
b. China rose indicator
c. Turmeric solution
d. Methyl orange

7. a. Define neutralization reaction.
b. Write the word equation for the reaction between Sodium Hydroxide and hydrochloric acid.
8. Vinegar is added to baking soda. A chemical reaction takes place and a gas is released .
 - a. Name the gas formed.
 - b. Which product is formed when this gas is passed through lime water?
 - c. What is the chemical name of lime water?
9. What is galvanization of iron ?

Section C

[3×3=9]

10. Which Chemicals are present in the following
 - a. Calamine
 - b. Window Cleaner
 - c. Milk of magnesia
11. Paheli has an acidic drink , a basic drink and a neutral drink .She has a red litmus and a blue Litmus Paper. Explain how will she determine the nature of the three drinks .
12. a. Mention two differences between physical and chemical changes .
b. LPG exist as a liquid in the cylinder .When it comes out from the cylinder it becomes a gas (Change A) .Then it burns (Change B).
Out of these two changes which is a chemical change? Explain.

Section D

[5×1=5]

13. a. With the help of an activity show that both air and water are necessary for rusting to take place.
b. Write the chemical formula of rust and mention its nature.
- OR**
14. a. Define displacement reaction .
b. With the help of a labelled diagram show the reaction between iron and copper sulphate solution. (Mention the colour change also).

BIOLOGY

I. Multiple Choice Questions (choose and write the correct option)-

1. Which of the following statement is correct? [1]
Statement 1: In organisms called lichens, an alga and a fungus live together.
Statement 2: The alga provides shelter, water and minerals to the fungus and in return, the fungus provides food which it prepares by photosynthesis.
 - a. Statement 1
 - b. Statement 2
 - c. Both statements 1 and 2
 - d. None of these

2. Which combination of words is correct for P, Q, R, and S to fill in the blanks? [1]
Our heart is divided into P chambers. The upper two chambers called atria are Q walled while the lower two chambers called ventricles are R walled. The left side of heart is completely separated from right side with the help of a partition called S.
- P- four; S- septum; Q- thin; R - thick
 - P- four; R - thick; S- septum; Q- thin
 - Q- thin; R - thick; S- septum; P- four
 - P- four; Q- thin; R - thick; S- septum

II. Answer in one sentence: - [1x2]

3. In amoeba, the food becomes trapped in a food vacuole. How does this food vacuole help in the process of digestion?
4. a. Name one organism that respire anaerobically.
b. How does this organism help in beverage and baking industry?

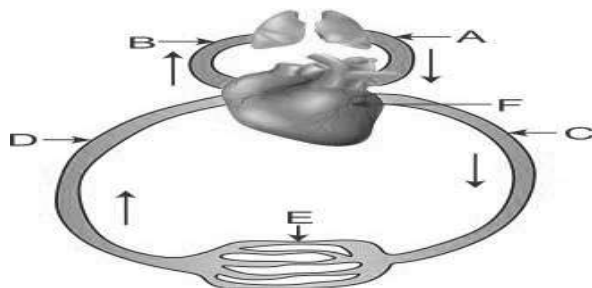
III. Short answer type I questions: - [2x4]

5. Bile juice does not contain any digestive enzymes, yet it is essential for digestion, Why so? Mention two points.
6. a. Respiration in fish is different from humans. Explain in brief how fishes can breathe through gills.
b. Draw a fish and label gills.
7. Mention two differences between arteries and veins.
8. a. Name the only artery that carries carbon dioxide rich blood in humans.
b. Why is it called an artery if it does not carry oxygen rich blood?
c. What is the purpose of using stethoscope by a doctor?

IV. Short answer type II questions: - [3x3]

9. a. Autotrophs and heterotrophs are two different organisms with distinct modes of nutrition. How are they different from each other? Mention two points.
b. How is the association between leguminous plant and *Rhizobium* bacteria beneficial to each other?
10. a. Gastric glands in stomach release hydrochloric acid, enzyme pepsin and mucus. What will happen if mucus is not secreted by the gastric glands?
b. Name the following:
i. A parasitic plant with yellow, slender and tubular stem.
ii. Pores through which leaves exchange gases.
c. Alimentary canal is different from digestive system. Comment how?

11. Given below is a schematic diagram of circulation. Study the same and answer the questions that follow: -

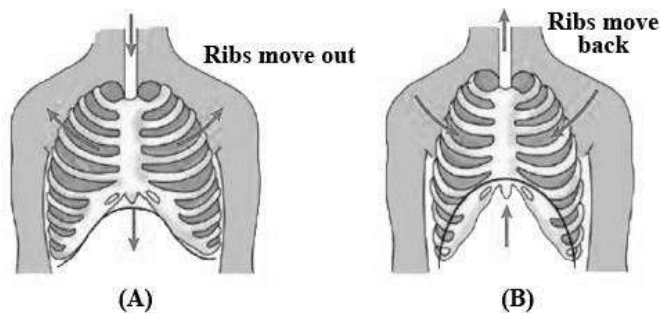


- Name the parts A and B indicated by guidelines.
- Mention one functional difference between the parts marked C and D.
- What is the main function of the part labelled E?

V. *Very long answer type questions:* -

[5]

12. Observe the figure given as A and B and answer the following questions: -



- Which of the figures A and B indicate the process of inhalation and which indicates the process of exhalation?
- Explain the mechanism of inhalation in human beings.
- What role does the diaphragm play in the process of breathing?
- Breathing through the nose is said to be healthier than breathing through the mouth. Give reason why?

OR

- Mention two differences between:
 - Aerobic and anaerobic respiration
 - Respiration and photosynthesis
- Why do mountaineers carry oxygen cylinders with them?



DELHI PUBLIC SCHOOL

SAIL TOWNSHIP, RANCHI

HALF YEARLY EXAMINATION (2022-23)

Class - VII
Time - 3 Hours

Subject - Social Science
Maximum Marks- 80

HISTORY

I. Choose the correct option as answer to the following questions -

[1×9=9]

1. Settlements of the peasants in the Chola period was known as-
 - a. ur
 - b. nadu
 - c. sabha
 - d. nagaram
2. He established the Chola kingdom-
 - a. Vijayalaya
 - b. Rajaraja I
 - c. RajendraChola
 - d. Dantidurga
3. They ruled over Delhi and Ajmer-
 - a. Chauhans
 - b. Palas
 - c. Cholas
 - d. Rashtrakutas
4. During whose reign the Sultanate was largest -
 - a. AlauddinKhalji
 - b. Iltutmish
 - c. Muhammad Tughluq
 - d. Balban
5. A fortified settlement with soldiers in the medieval period was termed as-
 - a. hinterland
 - b. temple town
 - c. garrison town
 - d. zabt
6. A tax on cultivation amounting to about 50 % of the peasant's produce was known as-
 - a. zajiya
 - b. zabt
 - c. kharaj
 - d. zat

7. Who was the author of Akbarnama was-
- Birbal
 - AbulFazal
 - Rahim
 - Tansen
8. Akbar's revenue minister was-
- Tansen
 - Todarmal
 - Maan Singh
 - Birbal
9. The Sisodiya Rajputs ruled over which territory
- Marwar
 - Mewar
 - Chittor
 - Ajmer

II. Answer the following questions

[3×3=9]

1. Explain the major religious developments during the medieval period?
2. What were the activities associated with the Chola temples? Explain any three.
3. What were the steps taken to ensure that muqtis performed their duties of office?

III. Answer in detail -

1. a. Who were bigots? [2]
- b. How were the debates with the religious scholars important in the formation of Akbar's ideas on governance? [3]

IV. Read the paragraph and answer the following questions-

[5]

It was during this period that important changes occurred in Hinduism. These included the worship of new deities, the construction of temples by royalty and the growing importance of brahmins or the priests as the dominant groups in the society. Their knowledge of Sanskrit texts on the brahmana's a lot of respect in the society. One of the major developments of this period was the emergence of the idea of bhakti- of loving personal deity that devotees could reach without the aid of priests or elaborate rituals. This was also the period when new religions appeared in the subcontinent. Merchants and migrants first brought the teachings of the holy Quran to India in the seventh century.

1. What earned brahmanas respect in the society?
2. Derive the new idea of bhakti from the above passage.
3. Who constructed the temple?
4. Who brought the teachings of the holy Quran to India?
5. This paragraph is about which period of Indian history?

CIVICS

I. Choose the correct option as answer to the following questions-

[1×5=5]

1. It was the first state in India to introduce the mid – day meal program-
 - a. Assam
 - b. Karnataka
 - c. Uttar Pradesh
 - d. Tamil Nadu
2. It refers to thinking of one and others as worthy of respect-
 - a. equality
 - b. caste
 - c. dalit
 - d. dignity
3. A group of parties with same ideology is known as
 - a. coalition
 - b. majority
 - c. opposition
 - d. constituency
4. When someone is not given due recognition for a task for job they have done ,it is known as-
 - a. devalued
 - b. care giving
 - c. identify
 - d. dignity
5. Women who labour both inside the house and outside are-
 - a. double – burdened
 - b. devalued
 - c. stereotyped
 - d. none of these

II. Answer the following questions-

[3×3=9]

1. Explain the terms invisible, physically demanding and time consuming with reference to housework done by women.
2. Explain how do some MLAs become Ministers.
3. Why is Universal Adult Franchise important in a democracy?

III. Answer in detail Give five points of difference for each.

[5]

1. Distinguish between private and public health care services .

IV. Read the passage and answer the following questions-

[5]

Campaigns to fight discrimination and violence against women have led to new laws being passed. A law was made in 2006 to give women who face physical and mental violence within their home better known as domestic violence ,some legal protection. Similarly efforts made by the women’s movement led the Supreme Court to formulate guidelines in 1997 to protect women

against sexual harassment at the workplace and within educational institutions. In 1980 women's group across the country spoken out against dowry deaths i.e the cases of young brides being murdered by the In-laws or husbands greedy for more dowry .They did it so by coming on to the streets ,approaching the courts and by sharing information through media .Eventually this became a public issue in the newspapers and society and the dowry laws were changed to punish families who seek dowry.

1. What is domestic violence?
2. When was a law passed against domestic violence?
3. When did Supreme Court formulate guidelines to protect women against sexual harassment?
4. What are dowry deaths?
5. What are the methods adopted by women to seek justice?

GEOGRAPHY

I. Answer the following questions in very short :

[1X6=6]

1. Write the TERM for the following sentence:
It is a trade in which goods are exchanged without the use of money.
2. Match the columns and choose the correct option :

Column I	Column II
a) Environment	i. Domain of plant and animal kingdom
b) Atmosphere	ii. Source of mineral wealth
c) Biosphere	iii. Envelope of air
d) Lithosphere	iv. Our surroundings

Options:

- A. a) - i, b) - ii, c) - iii, d) - iv
 - B. a) - iv, b) - iii, c) - i, d) - ii
 - C. a) - i, b) - iii, c) - ii, d) - iv
 - D. a) - iv, b) - ii, c) - i, d) - iii
3. Write true or false for the following statement :
The innermost layer of the earth is core with a radius of about 6371 km.
 4. Why do the plates move?
 5. Which place in the Sahara desert recorded the highest temperature in 1922?
 6. Fill in the blank :
The National Highway _____ connects Leh to Kashmir valley through Zoji la pass.

II. Answer the following questions in Short:

[3X2=6]

1. "Minerals are very important to humankind". Explain the statement in three points.
2. Explain the climatic conditions of the Ladakh desert. Write any three points.

III. Answer the following questions in detail:

[5X2=10]

1. A. How are sedimentary rocks formed?
B. Differentiate between intrusive igneous rocks and extrusive igneous rocks? Write three points of each. (2+3=5)
2. Explain any five features made by a river.

IV. Draw and colour a diagram of features made by sea waves and label it.

[3]

V. Locate and label the following on the given Political Map of Africa.

[1x3=3]

1. Red Sea.
 2. Niger
 3. Mediterranean Sea.
-

AFRICA - POLITICAL

अफ्रीका - राजनैतिक





DELHI PUBLIC SCHOOL
SAIL TOWNSHIP, RANCHI
HALF YEARLY EXAMINATION (2022-23)

Class - VII
Time - 90 Minutes

Subject - Spanish
Maximum Marks- 40

Contesta a las preguntas siguientes :-

[10]

1. ¿Dónde van los niños?
2. ¿Quiénes van a cuidar a los animales?
3. ¿Qué quiere ser César?
4. ¿Qué te duele? (espalda)
5. ¿Qué le duele a Ramón? (garganta)
6. ¿Qué vas a ser de mayor?
7. ¿Qué tiempo hace en primavera?
8. ¿Qué tiempo hace en verano?
9. ¿Qué tiempo hace en otoño?
10. ¿Qué tiempo hace en invierno?

11. Adivina la profesión :-

[2]

- a. Trabaja en un restaurante. Él es
- b. Trabaja en un periódico. Él es

12. Escribe y completa la frase con número ordinal:-

[3]

- Toco el número 5. Voy a la planta.
Toco el número 2. Subo al piso.
Toco el número 6. Bajo a la planta.

13. Escribe frases con estar+gerundio

[4]

- a. Ana está en el parque. (Jugar)
- b. Yo estoy en el cuaderno. (Escribir)
- c. Nosotros estamos el sol en la playa. (Tomar)
- d. Tú y tus hermanos estáis mucho. (Hablar)

14. Utiliza "por qué" y "porque" correctamente :-

[4]

- a. ¿..... vas al médico? estoy enfermo.
- b. ¿Qué pasa aquí? ¿..... lloráis?
- c. Están llorando tienen miedo.
- d. Está cansado estudia mucho.

15. Conjuga el verbo en imperativo para usted :- [4]
a. (Descansar) unas horas después de comer.
b. (Beber) mucha agua en verano.
c. (Comer, ustedes) demasiados dulces.
d. (Caminar) una hora todos los días.
16. Expresa cantidad con la palabra adecuada :- [4]
(mucho, poco, poca, mucha, muchos, muchas)
a. Las ovejas dan leche.
b. Los cerdos tienen pelo en su cuerpo.
c. Las gallinas tienen pollitos.
d. Los árboles de la granja tienen manzanas.
17. Usa adverbios de lugar :- [4]
(encima,debajo,dentro,fuera)
a. El gato está (on) tejado del establo.
b. El perro está (inside) de la casa
c. La vaca está (outside) de la casa.
d. El chico está jugando (under) del árbol.
18. Haz conjugación de los verbos abajos :- [5]
Ser, estar, tomar, comer, vivir
-